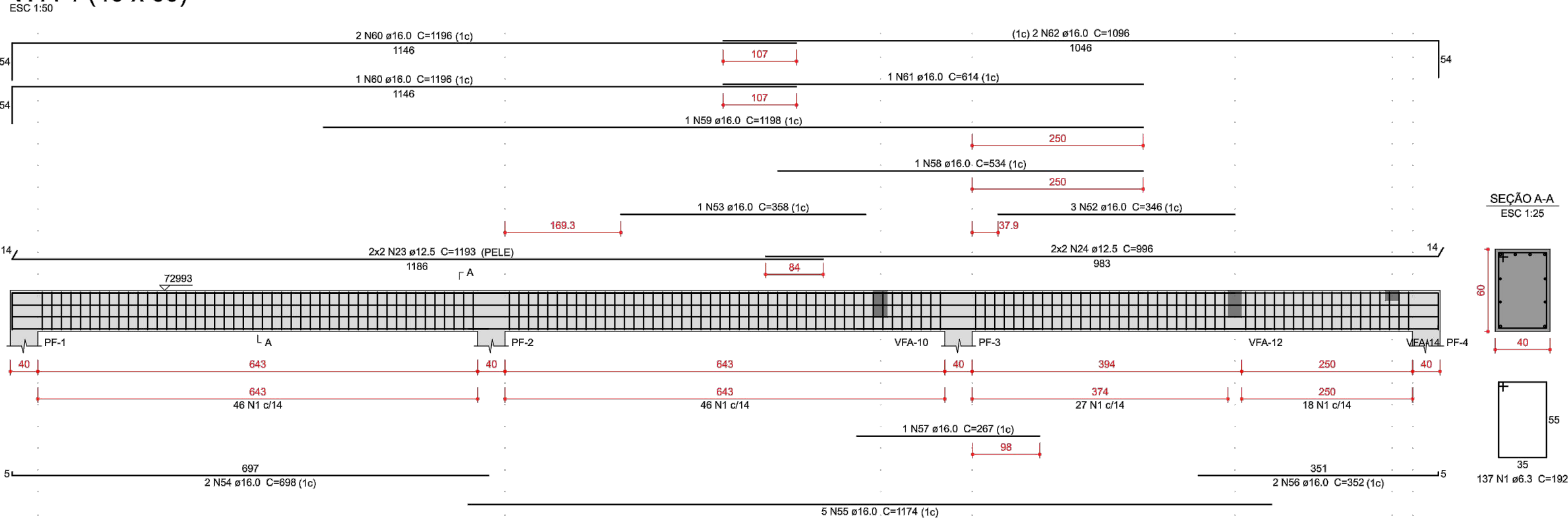
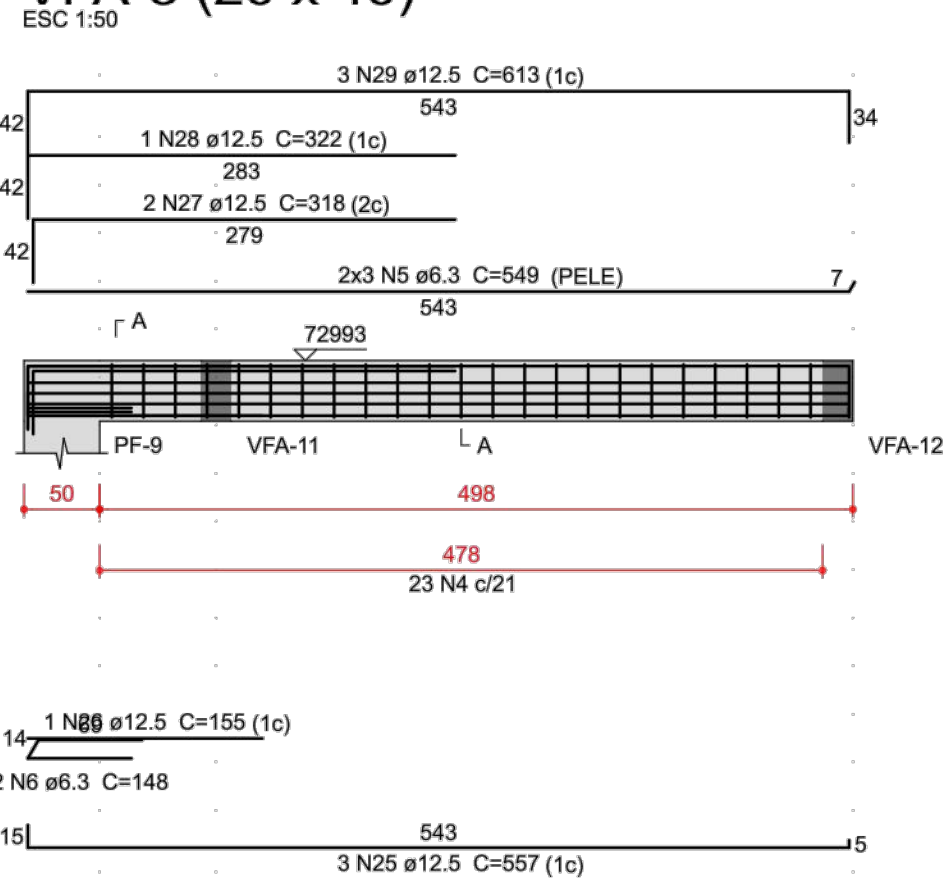


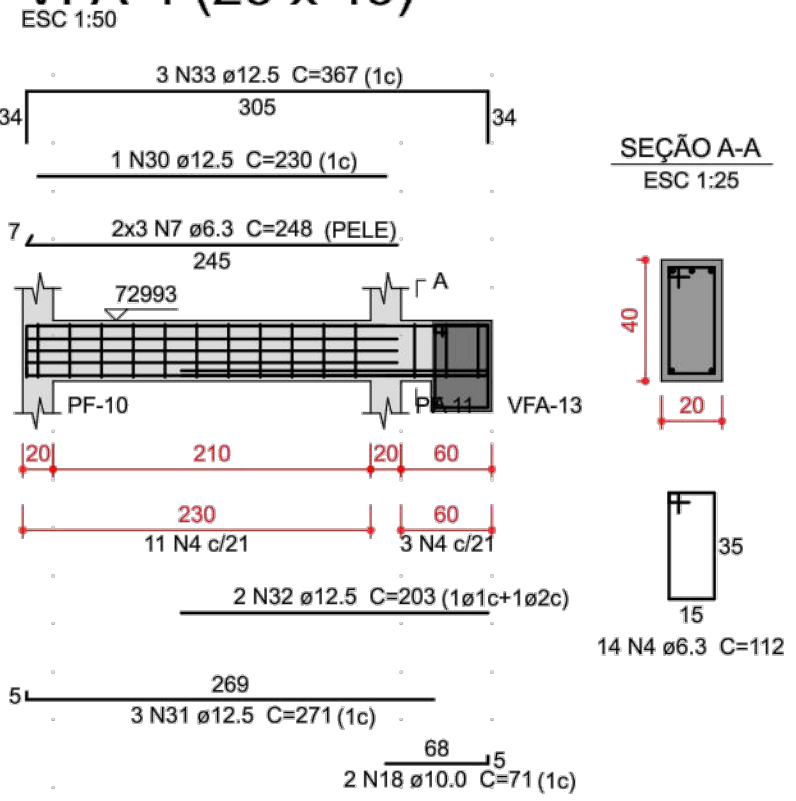
VFA-1 (40 x 60)



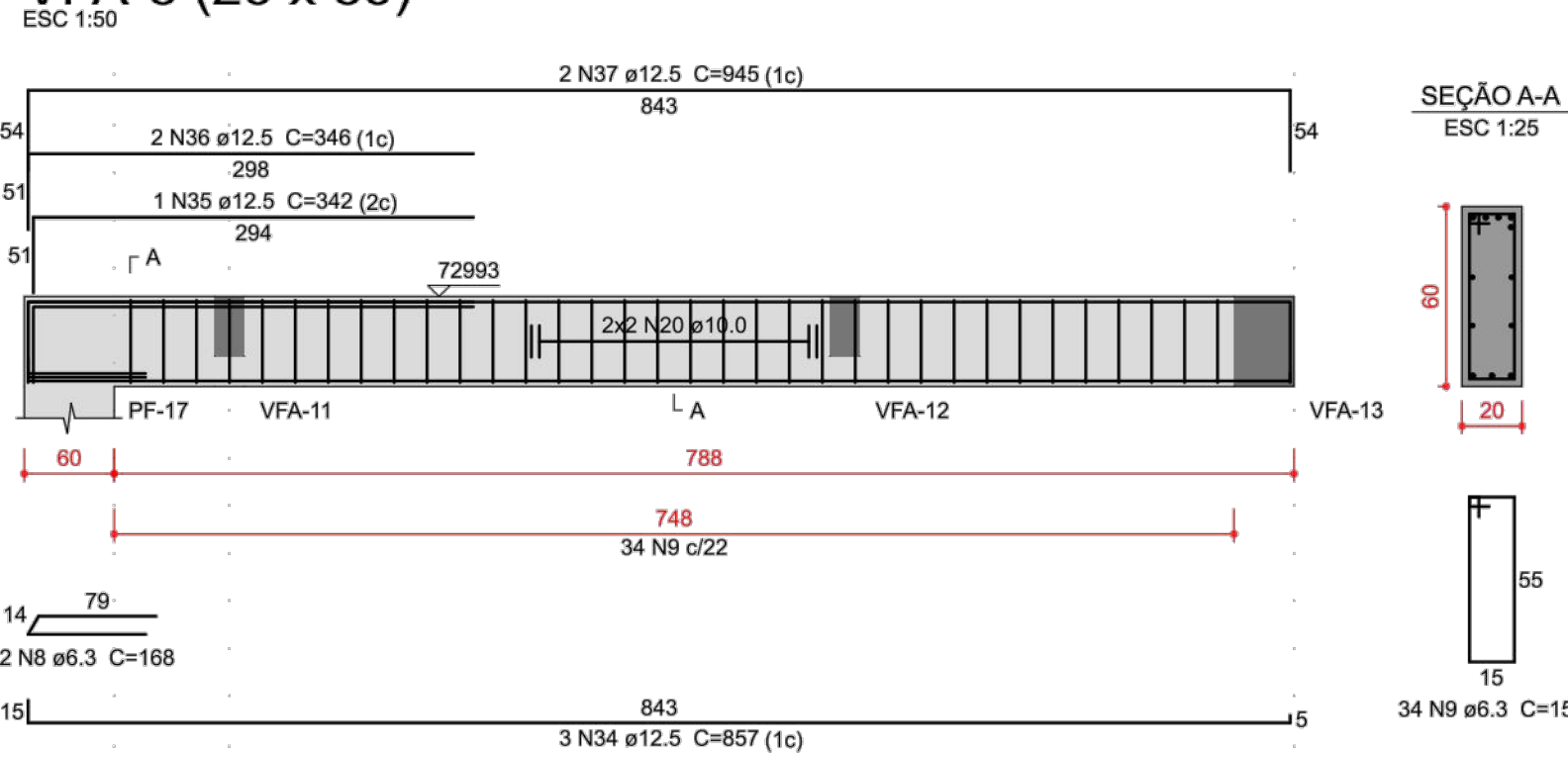
VFA-3 (20 x 40)



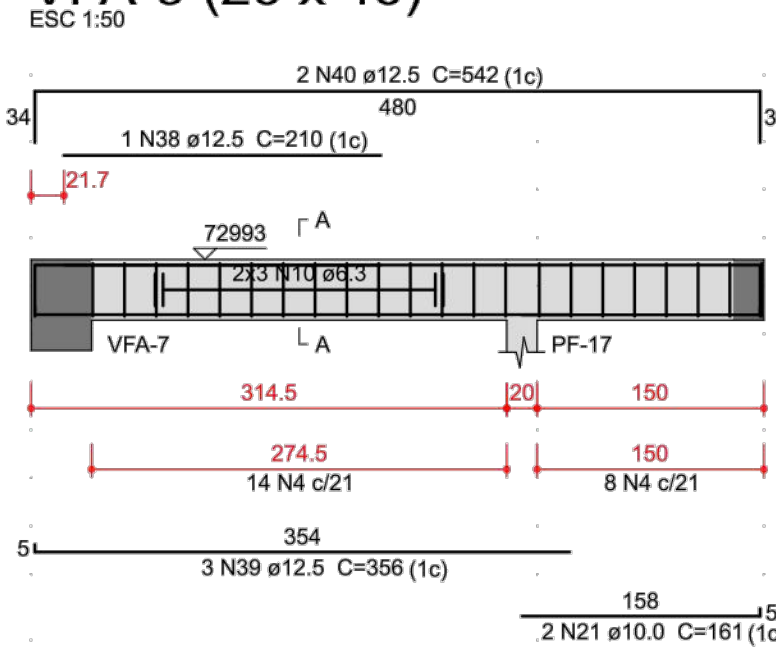
VFA-4 (20 x 40)



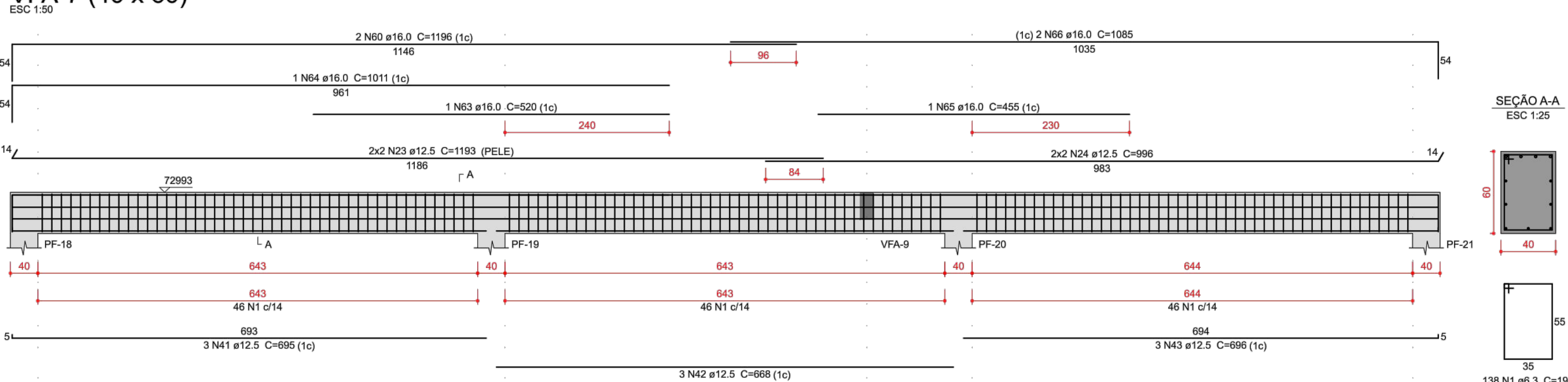
VFA-6 (20 x 60)



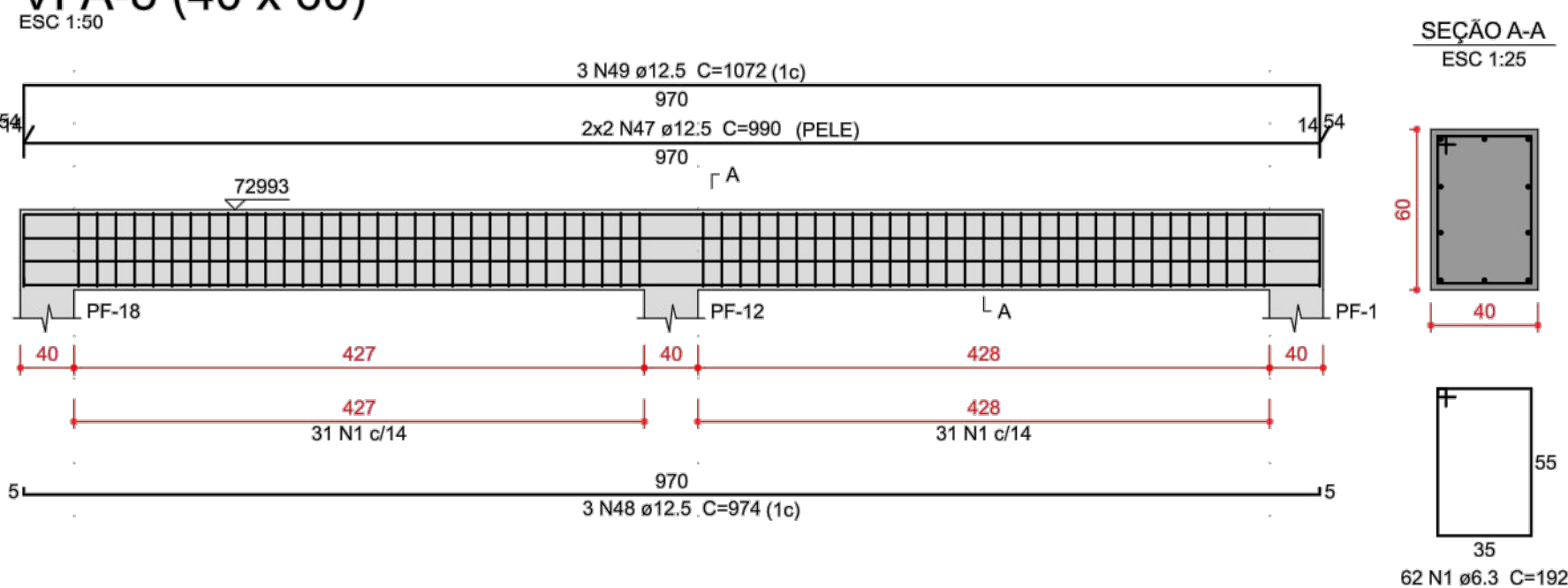
VFA-9 (20 x 40)



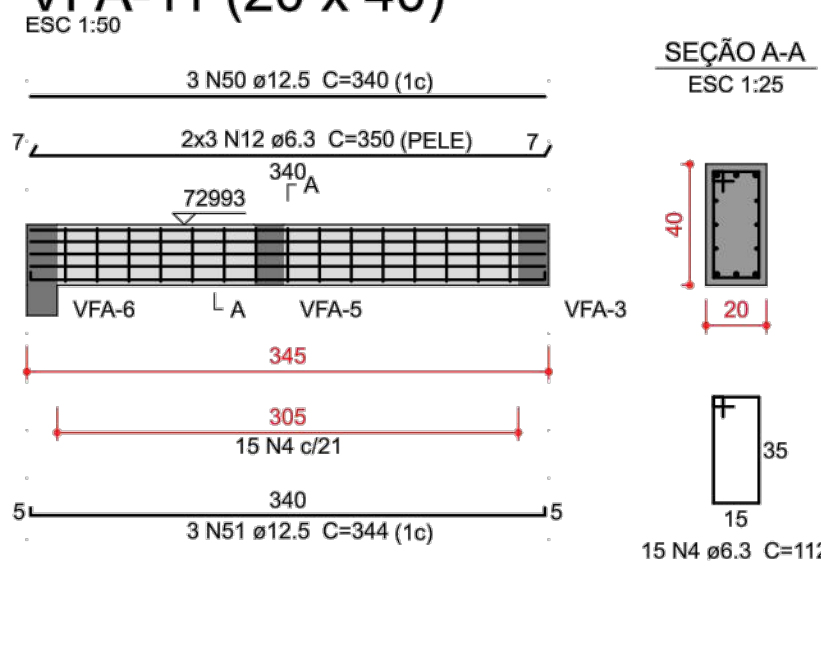
VFA-7 (40 x 60)



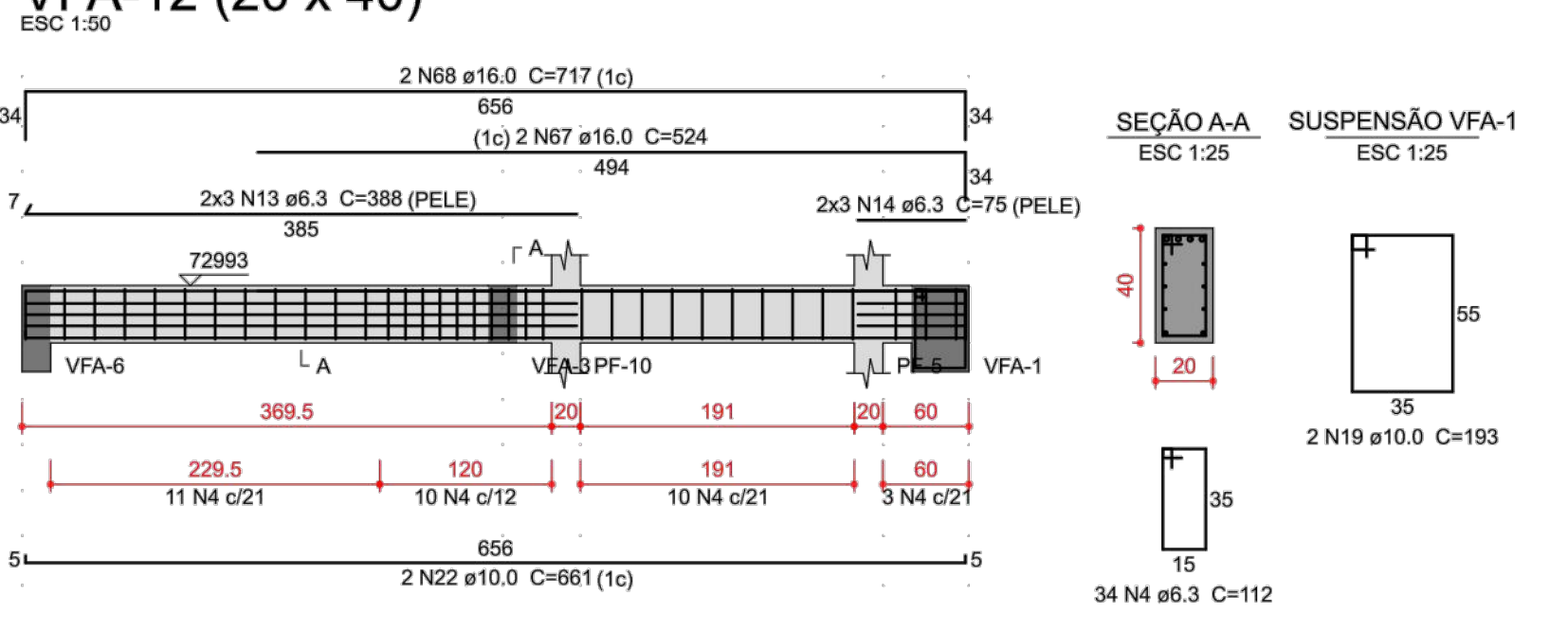
VFA-8 (40 x 60)



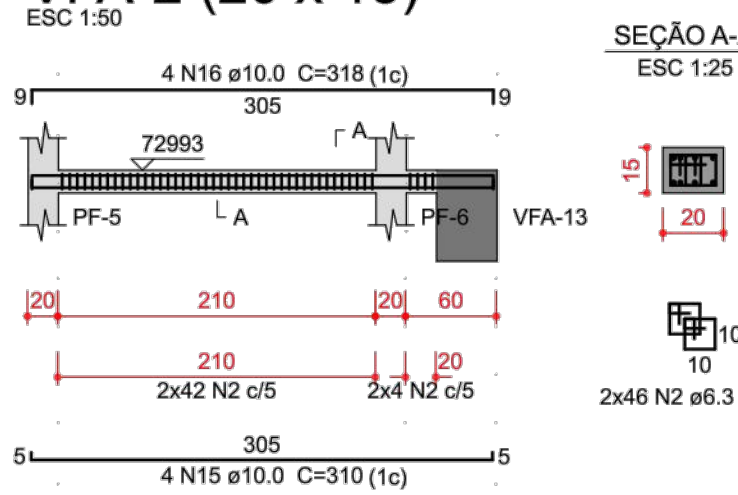
VFA-11 (20 x 40)



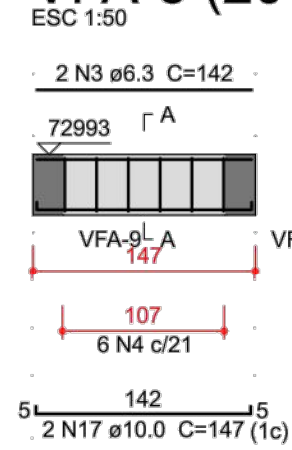
VFA-12 (20 x 40)



VFA-2 (20 x 15)



VFA-5 (20 x 40)



Relação do aço

ACO	N	DIAM (mm)	QUANT	C.TOTAL (m)	C.TOTAL (kg)
CASO	1	6.3	337	192	64134
	2	6.3	82	52	4784
	3	6.3	2	142	284
	4	6.3	128	112	14336
	5	6.3	6	649	3294
	6	6.3	2	148	286
	7	6.3	6	248	1488
	8	6.3	2	109	236
	9	6.3	34	152	5168
	10	6.3	6	CORR	1980
	11	6.3	6	334	2004
	12	6.3	6	350	2100
	13	6.3	6	388	2338
	14	6.3	6	75	450
	15	10.0	4	310	1240
	16	10.0	4	318	1272
	17	10.0	2	147	284
	18	10.0	2	71	142
	19	10.0	3	193	579
	20	10.0	4	CORR	3372
	21	10.0	2	161	322
	22	10.0	2	691	1322
	23	12.5	8	1193	9544
	24	12.5	8	958	7568
	25	12.5	3	557	1671
	26	12.5	1	155	155
	27	12.5	2	318	636
	28	12.5	1	322	322
	29	12.5	3	613	1839
	30	12.5	1	235	230
	31	12.5	3	271	813
	32	12.5	2	203	406
	33	12.5	3	387	1101
	34	12.5	3	857	2571
	35	12.5	1	342	342
	36	12.5	2	346	692
	37	12.5	2	845	1890
	38	12.5	1	210	210
	39	12.5	3	336	1068
	40	12.5	2	542	1084
	41	12.5	3	695	2085
	42	12.5	3	698	2094
	43	12.5	3	696	2088
	44	12.5	3	335	1005
	45	12.5	1	94	94
	46	12.5	3	386	1158
	47	12.5	4	980	3660
	48	12.5	3	674	2022
	49	12.5	3	1072	3216
	50	12.5	3	340	1020
	51	12.5	3	344	1032
	52	16.0	3	346	1038
	53	16.0	1	358	358
	54	16.0	2	698	1396
	55	16.0	5	1174	5870
	56	16.0	2	262	704
	57	16.0	1	267	267
	58	16.0	1	534	534
	59	16.0	1	1198	1198
	60	16.0	6	1196	9980
	61	16.0	1	614	614
	62	16.0	1	1096	2192
	63	16.0	1	520	520
	64	16.0	1	1011	1011
	65	16.0	1	455	455
	66	16.0	2	1085	2170
	67	16.0	2	524	1048
	68	16.0	2	717	1434

ACO	DIAM (mm)	C.TOTAL (m)	PESO * 10 % (kg)
CASO	6.3	1035.6	278.7
	10.0	85.5	87.9
	12.5	611.7	603.3
	16.0	267.9	465.1
PESO TOTAL (kg)			1365.1

Resumo do aço

Volume de concreto (C-30) = 15.75 m³

Área de forma = 124.21 m²

PRÉDIO FATEC
ARMAÇÃO DE VIGAS DO PAVIMENTO
ACESSO PASSARELA

FOLHA:
020



MUNICÍPIO DE CARAPICUÍBA
SECRETARIA DE DESENVOLVIMENTO URBANO
SETOR DE PROJETOS

OBRA: Construção de Passarela de Interligação dos Terminais Rodoviários
Metropolitano e Municipal com a Estação CPTM e Av. Francisco Pignatari

LOCAL: Av. Governador Mário Covas e Av. Francisco Pignatari

RECURSO/CONVÊNIO: XXXXXXXXXXXXXXXXXXXX ART/RRT: 28027230172709526

TABELA DE ÁREAS

Total de áreas	
Área total	XX m2
Área de intervenção	1.074,8 m2

DIORGENS GODÓI DA SILVA
ENGENHEIRO CIVIL
CREA-SP Nº 5069838630

DATA: 18/02/2022 ESCALA: 1:200

DESENHO ELABORADO POR DIORGENS GODÓI DA SILVA
ENGENHEIRO CIVIL
CREA-SP nº 5069838630

REVISÃO NÚMERO: 2 MÊS: 02/2022